

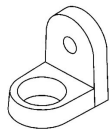
8L16-DEKA

SPECIFICATIONS

| | |
|-----------------------------|------------------------------|
| Nominal Voltage (V) | 6V |
| Capacity at C/100 | 420Ah |
| Capacity at C/20 | 370Ah |
| Weight | 113 lbs. (51 kg) |
| Operating Temperature Range | -22°F (-30°C) - 122°F (50°C) |

For Charging Parameters please refer to www.mkbattery.com
Click on Technical Data, then on Photovoltaic Charging Parameters in the PV/Solar section

Terminal T875



Made in the U.S.A. by East Penn Manufacturing Co., Inc.

Distributed by:

Flooded Battery, Wet type

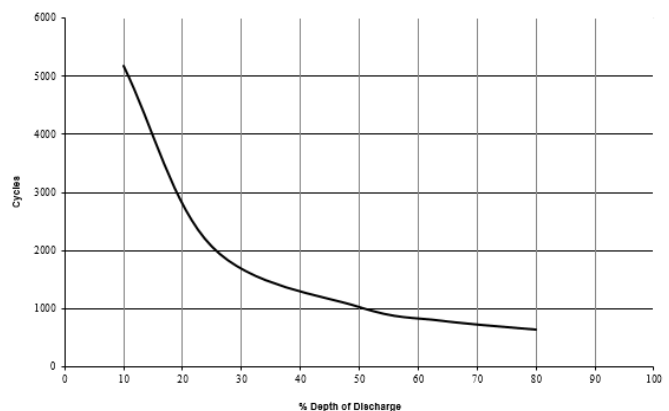


DIMENSIONS

Inches (mm)

| | |
|--------|----------------|
| Length | 11.72 (298 mm) |
| Width | 7.00 (178 mm) |
| Height | 16.27 (412 mm) |

Cycle Life vs Depth of Discharge at 25°C (77°F)



MK Battery

1631 South Sinclair Street • Anaheim, California 92806

Toll Free: 800-372-9253 • Fax: 714-937-0818 • E-mail: sales@mkbattery.com

